



# Passage Roxtec CF 24

Passage ouvrable pour armoires et coffrets.

Le Roxtec CF 24 est un cadre boulonné en aluminium. La compression est intégrée au cadre. Sa structure ouvrable facilite l'installation autour des câbles existants. Le produit est fourni sous forme de kits prêts à l'emploi incluant tous les composants nécessaires.



- Léger
- Surface optimisée
- Idéal pour la rénovation

## Caractéristiques du produit



Coupe-feu



IP/UL NEMA

## Structure d'installation



Armoires et coffrets

## Classements et certificats

### Feu

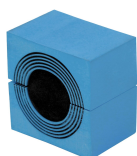
- Classement E/EI selon EN 45545 E30

### Étanchéité

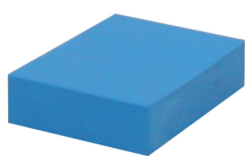
- IP 66/67

## Éléments d'étanchéité

### Éléments d'étanchéité



Module CM avec Multidiameter™



Module de compensation plein CM



Plaque de maintien C

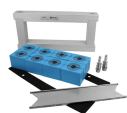


Lubrifiant Roxtec

Pour plus d'informations, veuillez consulter [roxtec.com](https://www.roxtec.com).

## Kits de passage préconfigurés

mm/kg



CF 24/8



CF 24/12



CF 24/28

Titre	Configuration	Dimensions externes WxHxD	Dimensions d'ouverture w x h	Poids	N° art.
CF 24/8	8x (10.0-25.0)	209 x 100 x 30	170(-2) x 60	1.5	CF00000240035
CF 24/12	8x (3.5-16.5), 4x (9.5-32.5)	209 x 100 x 30	170(-2) x 60	1.5	CF00000241235
CF 24/28	16x (3.5-16.5), 12x (3.5-10.5)	209 x 100 x 30	170(-2) x 60	1.5	CF00000242835



The product information provided by Roxtec does not release the purchaser of the Roxtec system, or part thereof, from the obligation to independently determine the suitability of the products for the intended process, installation and/or use.

Roxtec gives no guarantee for the Roxtec system or any part thereof and assumes no liability for any loss or damage whatsoever, whether direct, indirect, consequential, loss of profit or otherwise, occurred or caused by the Roxtec systems or installations containing components not manufactured by an authorized manufacturer and/or occurred or caused by the use of the Roxtec system in a manner or for an application other than for which the Roxtec system was designed or intended.

Roxtec expressly excludes any implied warranties of merchantability and fitness for a particular purpose and all other express or implied representations and warranties provided by statute or common law. User determines suitability of the Roxtec system for intended use and assumes all risk and liability in connection therewith. In no event shall Roxtec be liable for indirect, consequential, punitive, special, exemplary or incidental damages or losses.

The Roxtec products are offered and sold in accordance with the conditions of the Roxtec General Terms of Sales. The latest version of the Roxtec General Terms of Sales can be downloaded from <https://www.roxtec.com/en/about-us/about-roxtec/general-terms-of-sales/>

We reserve the right to make changes to the product and technical information without further notice. Any errors in print or entry are no claims for indemnity. The content of this publication is the property of Roxtec International AB and is protected by copyright.

This document was generated on: 2024-04-06